

Sommario
 Summary

	GS-OC Pistoni a gas con attacchi ad occhiello <i>Gas springs with eyelet-type end fitting</i>	270
	GS-PR Pistoni a gas con attacchi ad pressione <i>Gas springs with quick-type end fitting</i>	271
	GS90 Pistoni a gas con attacchi a pressione, forniti con staffe e viti <i>Gas springs with quick-type end fitting, supplied with brackets and screws</i>	272
	GS90/R Pistoni a gas con attacchi a pressione, forniti con staffe e viti, per anta a ribalta <i>Gas springs with quick-type end fitting, supplied with brackets and screws, for drop-down doors</i>	273
	GS WEL Pistoni a gas con testine a occhio saldate <i>Gas springs with welded eyelet - type end fittings</i>	274
	ALZA PIANO <i>Coffee Table Top Lift-Up Kit</i>	275

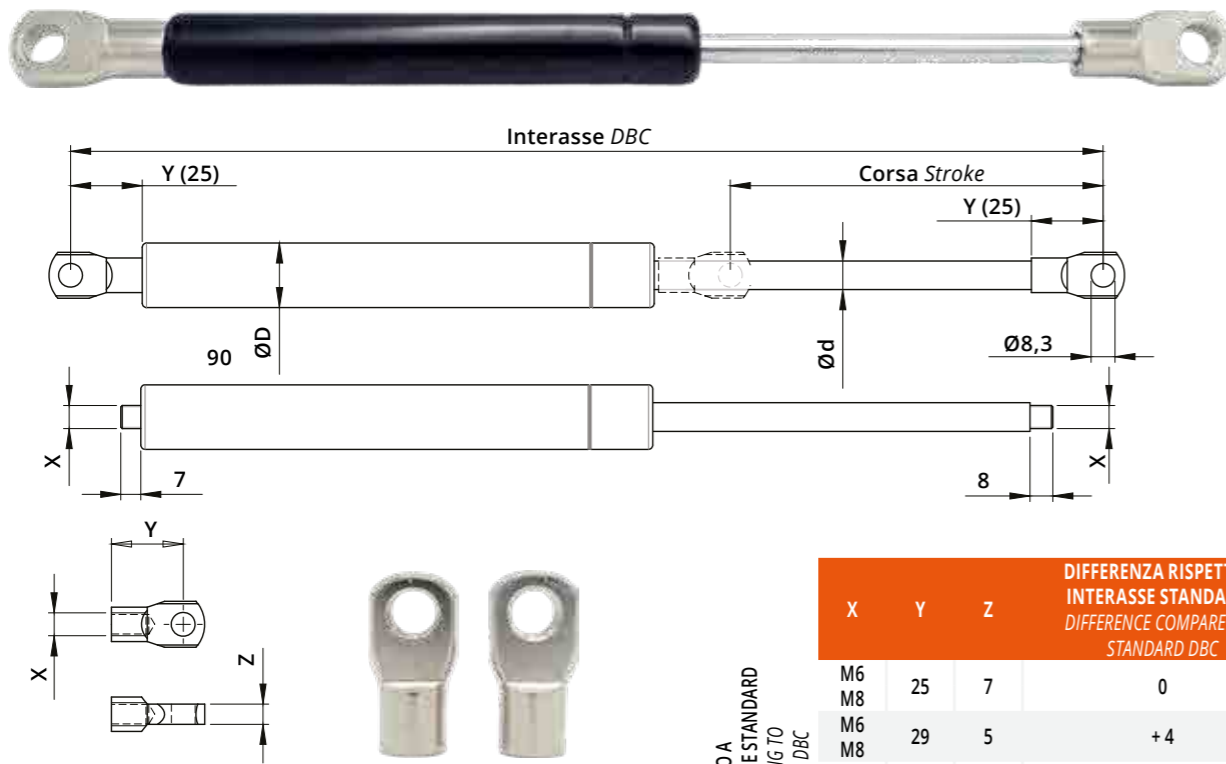
stm

PISTONI

GAS SPRINGS



Pistoni a gas con attacchi ad occhiello
Gas springs with eyelet-type end fitting



	X	Y	Z	DIFFERENZA RISPETTO A INTERASSE STANDARD - DIFFERENCE COMPARED TO STANDARD DBC
M6	25	7		0
M8	29	5		+4
M6	19,5	10		-5,5
M8	11,5	9,5		-13,5

FORZE DISPONIBILI - AVAILABLE FORCES

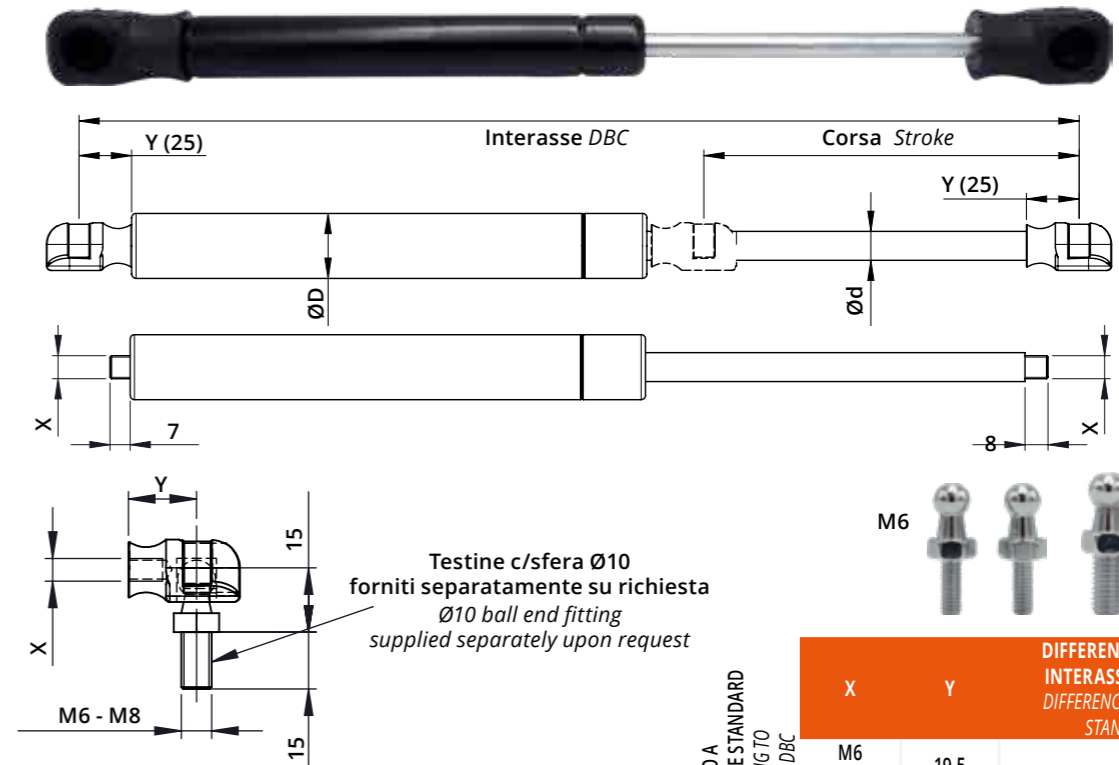
50	100	150	200	250	300	350	400	450	500	750	100	1200	1500
----	-----	-----	-----	-----	-----	-----	-----	-----	-----	-----	-----	------	------

Interasse DBC	Corsa Stroke	Forza (DA) Force (from)	Forza (A) Force (to)	ØD	Ød	X
170	45	200	350	15	6	M6
190	62	100	400	15	6	M6
		500	650	18	8	M8
220	68	100	400	15	6	M6
		500	750	18	8	M6
		1000	-	22	10	M8
240	80	100	400	15	6	M6
		500	750	18	8	M6
		1000	-	22,5	10	M8
260	87	100	400	15	6	M6
		500	-	18	8	M6
		750	1000	22	10	M8
280	97	100	400	15	6	M6
		500	750	18	8	M6
		1000	-	22	10	M8
300	100	100	400	15	6	M6
		500	1200	22	10	M8
		50	400	15	6	M6
320	115	500	750	18	8	M6
		1000	-	22	10	M8
		1200	-	22,5	10	M8
340	120	100	400	15	6	M6
		500	1000	22	10	M8
		1200	-	22,5	10	M8
		1500	-	28	12	M8

Interasse DBC	Corsa Stroke	Forza (DA) Force (from)	Forza (A) Force (to)	ØD	Ød	X
360	130	80	400	15	6	M6
		500	1000	22	10	M8
		1200	-	22,5	10	M8
380	140	100	400	18	8	M6
		500	1000	22	10	M8
		1200	-	22,5	10	M8
400	150	100	400	18	8	M6
		500	1000	22	10	M8
		1200	-	22,5	10	M8
415	160	100	400	18	8	M6
		500	1000	22	10	M8
		1200	-	22,5	10	M8
440	170	100	400	18	8	M6
		500	1000	22	10	M8
		1200	-	22,5	10	M8
460	180	100	400	18	8	M6
		500	1000	22	10	M8
		1200	-	22,5	10	M8
480	190	100	400	18	8	M6
		500	1000	22	10	M8
		1200	-	22,5	10	M8
		1500	-	28	12	M8

Interasse DBC	Corsa Stroke	Forza (DA) Force (from)	Forza (A) Force (to)	ØD	Ød	X
510	210	100	400	18	8	M6
		500	1000	22	10	M8
		1200	-	22,5	10	M8
530	220	100	400	18	8	M6
		500	1000	22	10	M8
		1200	-	22,5	10	M8
580	240	100	400	18	8	M6
		500	1000	22	10	M8
		1200	-	22,5	10	M8
610	260	200	1000	22	10	M8
		1200	-	22,5	10	M8
		200	1000	22	10	M8
685	300	200	1000	22	10	M8
		1200	-	22,5	10	M8
		200	1000	22	10	M8
710	315	200	1000	22	10	M8
		1200	-	22,5	10	M8
		200	1000	22	10	M8
785	350	200	1000	22	10	M8
		1200	-	22,5	10	M8
		200	1000	22	10	M8
885	400	200	1000	22	10	M8
		1200	-	22,5	10	M8
		200	400	26	12	M8
1100	500	500	1200	28	14	M8

Pistoni a gas con attacchi ad pressione
Gas springs with quick-type end fitting



Testine c/sfera Ø10
forniti separatamente su richiesta
Ø10 ball end fitting
supplied separately upon request

FORZE DISPONIBILI - AVAILABLE FORCES

50	100	150	200	250	300	350	400	450	500	750	100	1200	1500
----	-----	-----	-----	-----	-----	-----	-----	-----	-----	-----	-----	------	------

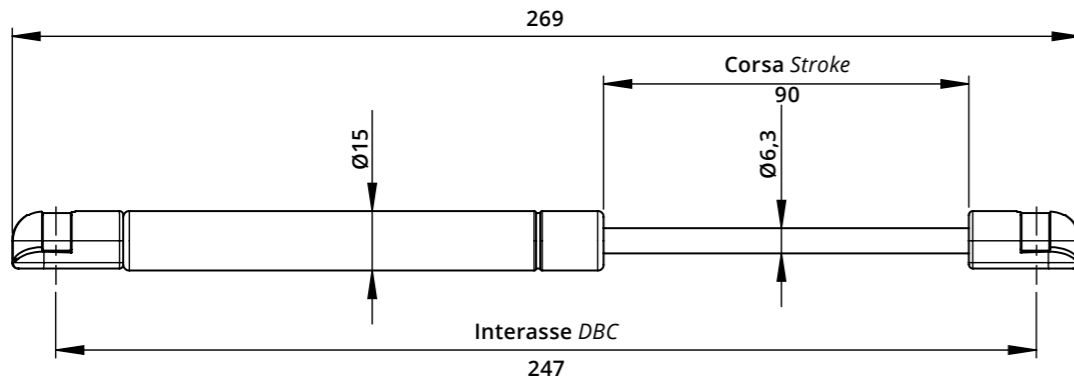
Interasse DBC	Corsa Stroke	Forza (DA) Force (from)	Forza (A) Force (to)	ØD	Ød	X
170	45	200	350	15	6	M6
190	62	100	400	15	6	M6
		500	650	18	8	M8
220	68	100	400	15	6	M6
		500	750	18	8	M6
		1000	-	22	10	M8
240	80	100	400	15	6	M6
		500	750	18	8	M6
		1000	-	22	10	M8
260	87	100	400	15	6	M6
		500	-	18	8	M6
		750	1000	22	10	M8
280	97	100	400	15	6	M6
		500	750	18	8	M6
		1000	-	22	10	M8
300	100	100	400	15	6	M6
		500	1200	22	10	M8
		50	400	15	6	M6
320	115	500	750	18	8	M6
		1000	-	22	10	M8
		1200	-	22,5	10	M8
340	120	100	400	15	6	M6
		500	1000	22	10	M8
		1200	-	22,5	10	M8
		1500	-	28	12	M8

Interasse DBC	Corsa Stroke	Forza (DA) Force (from)	Forza (A) Force (to)	ØD	Ød	X
360	130	80	400	15	6	M6
		500	1000	22	10	M8
		1200	-	22,5	10	M8
380	140	100	400	18	8	M6
		500	1000	22	10	M8
		1200	-	22,5	10	M8
400	150	100	400	18	8	M6
		500	1000	22	10	M8
		1200	-	22,5	10	M8
415	160	100	400	18	8	M6
		500	1000	22	10	M8
		1200	-	22,5	10	M8
440	170	100	400	18	8	M6
		500	1000	22	10	M8
		1200	-	22,5	10	M8
460	180	100	400	18	8	M6
		500	1000	22	10	M8
		1200	-	22,5	10	M8
480	190	100	400	18	8	M6
		500	1000	22	10	M8
		1200	-	22,5	10	M8
		1500	-	28	12	M8

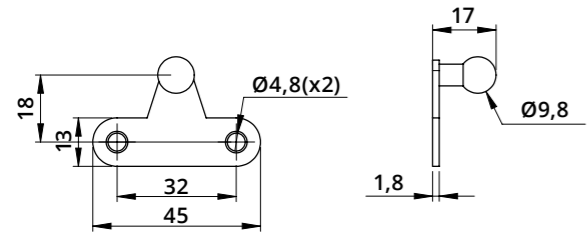
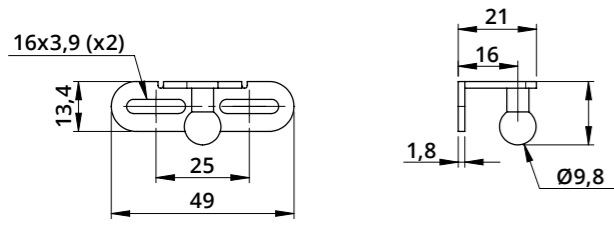
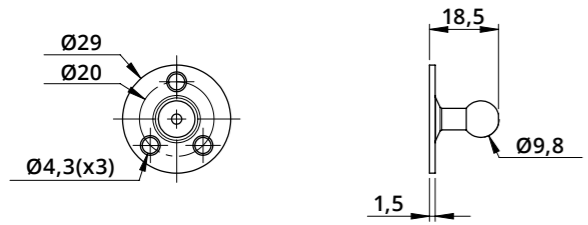
	X	Y	DIFFERENZA RISPETTO A INTERASSE STANDARD - DIFFERENCE COMPARED TO STANDARD DBC
M6	19,5		-5,5
M8	25		0

Y RIFERITO A INTERASSE STANDARD - Y RELATING TO STANDARD DBC

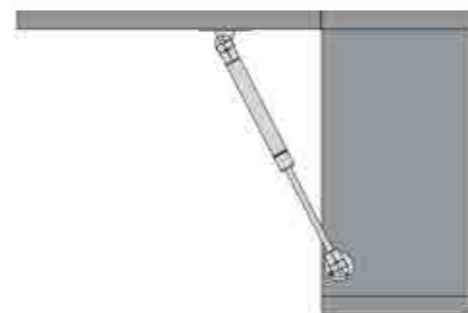
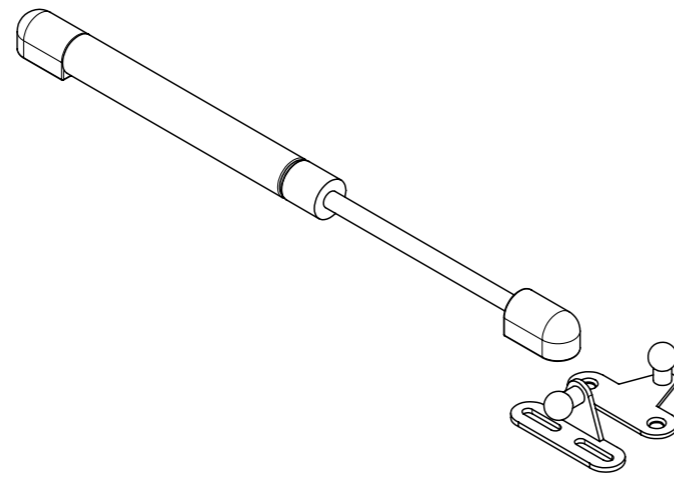
Pistoni a gas con attacchi a pressione, forniti con staffe e viti
Gas springs with quick-type end fitting, supplied with brackets and screws.



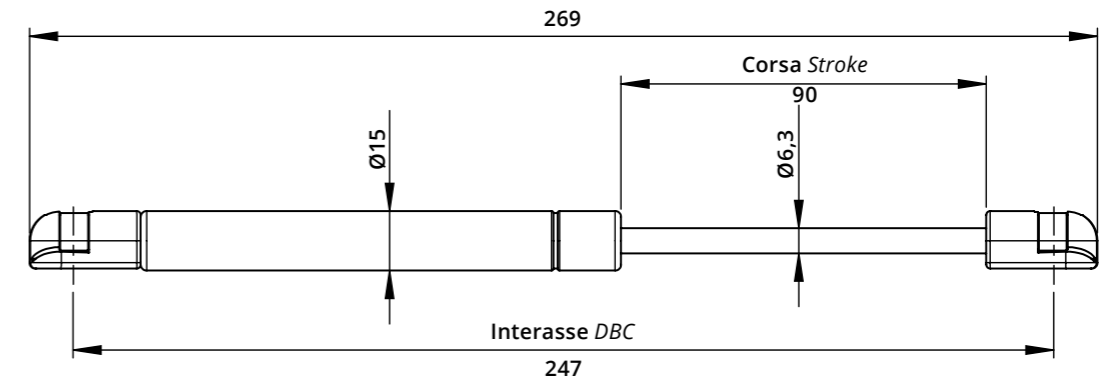
FORZE DISPONIBILI - AVAILABLE FORCES						
30	50	60	80	100	120	150
						180



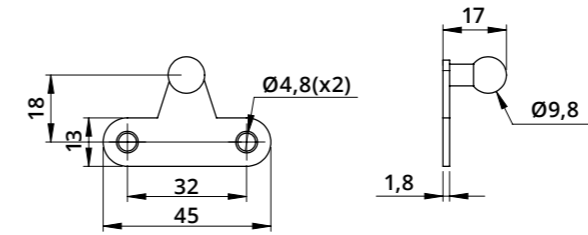
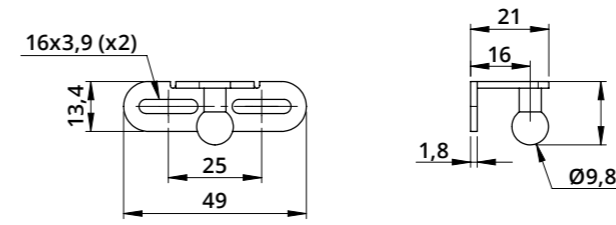
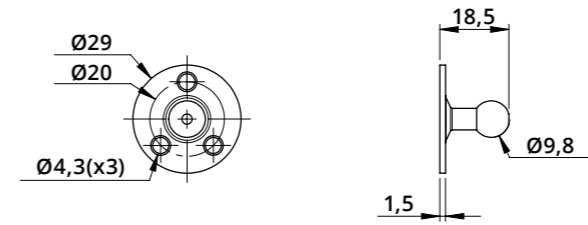
Vite Svasata
autofilettante (x7)
Chamfered self-tapping
screw (x7)



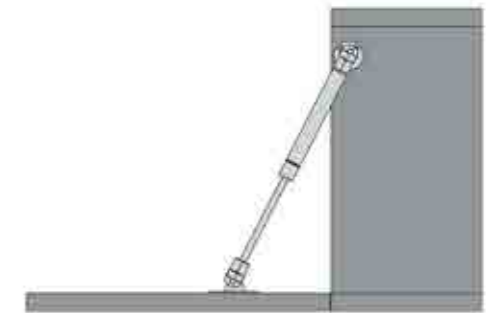
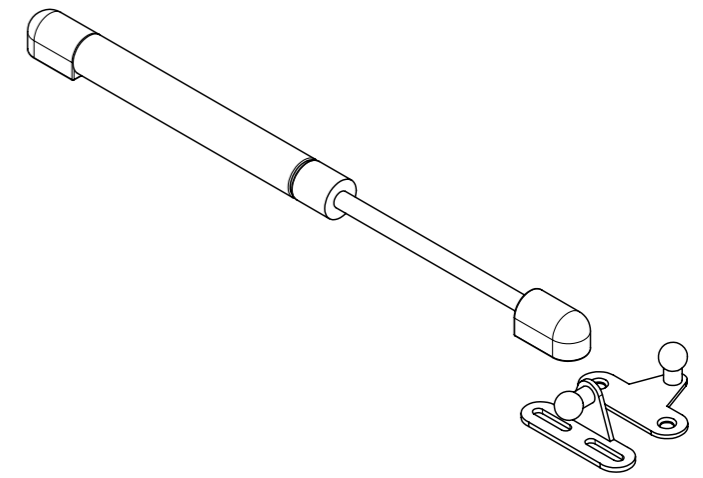
Pistoni a gas con attacchi a pressione, forniti con staffe e viti, per anta a ribalta
Gas springs with quick-type end fitting, supplied with brackets and screws, for drop-down doors



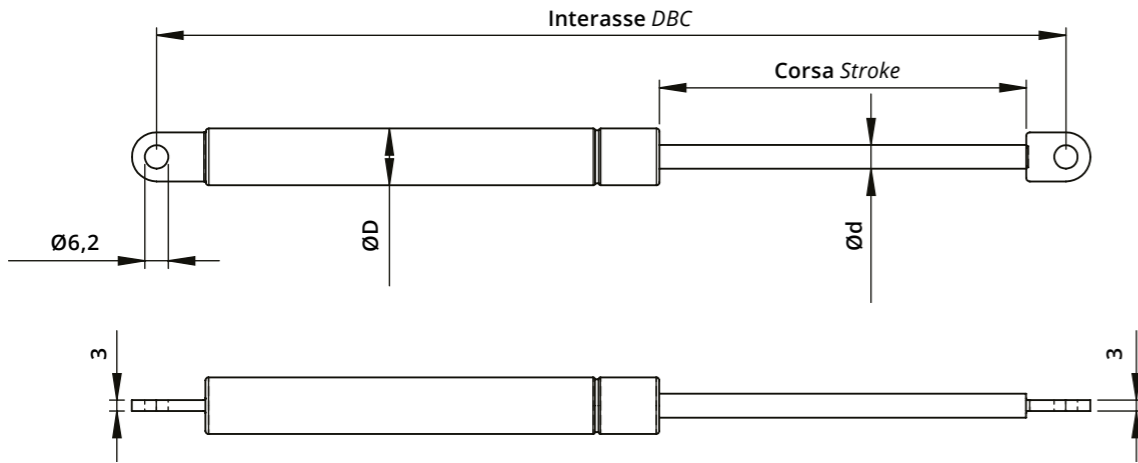
FORZE DISPONIBILI - AVAILABLE FORCES		
80	100	120



Vite Svasata
autofilettante (x7)
Chamfered self-tapping
screw (x7)



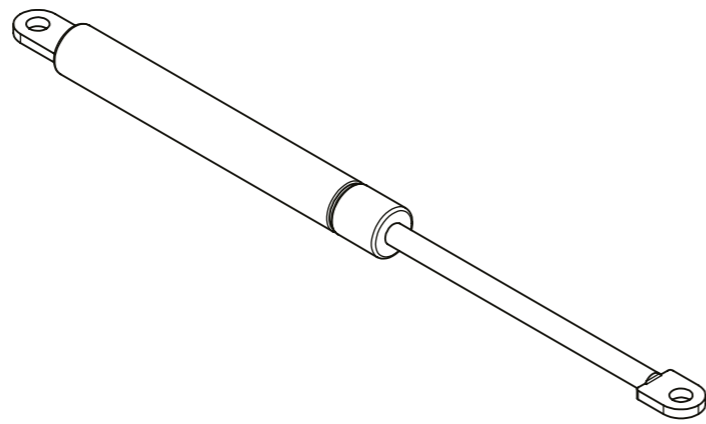
Pistoni a gas con testine a occhiello saldate
Gas springs with welded eyelet end fittings



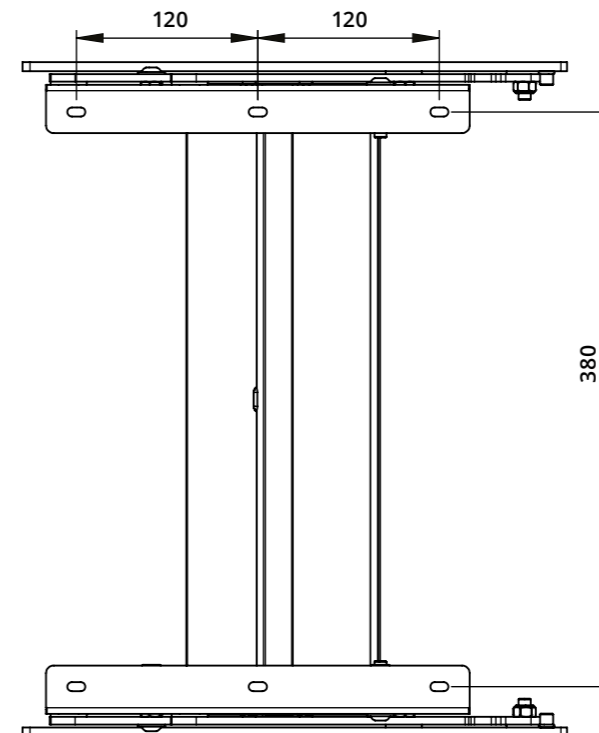
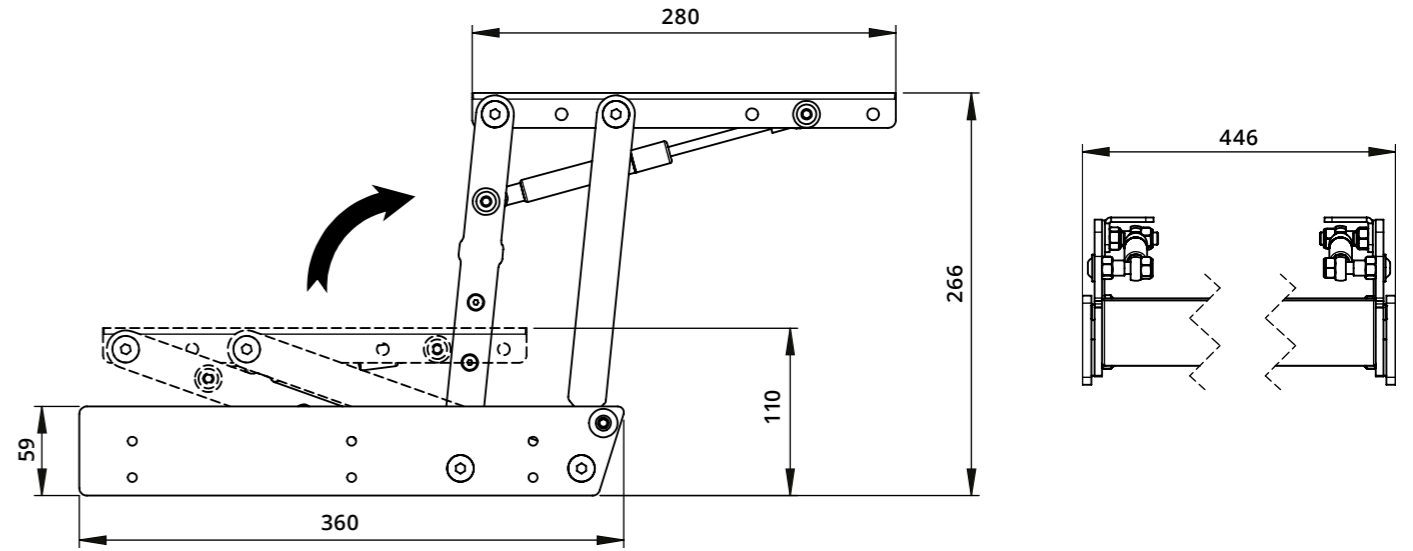
FORZE DISPONIBILI - AVAILABLE FORCES

100 150 200 250 300 350 400 500 550 600 630

Intersasse DBC	Corsa Stroke	Forza (DA) Force (from)	Forza (A) Force (to)	ØD	Ød
167	55	200 400	350 630	15 18	6 8
178	66	100	400	15	6
216	62	100	400	15	6
225	82	100	400	15	6
305	120	100	400	15	6



Alza Piano
Coffee Table Top Lift-Up Kit



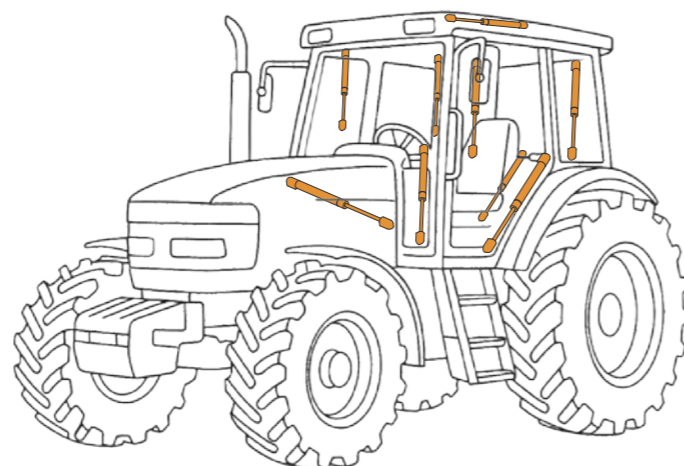
NOTA BENE
1. Colore a richiesta
2. Misure personalizzabili

NOTE
1. Colour upon request
2. Customizable size

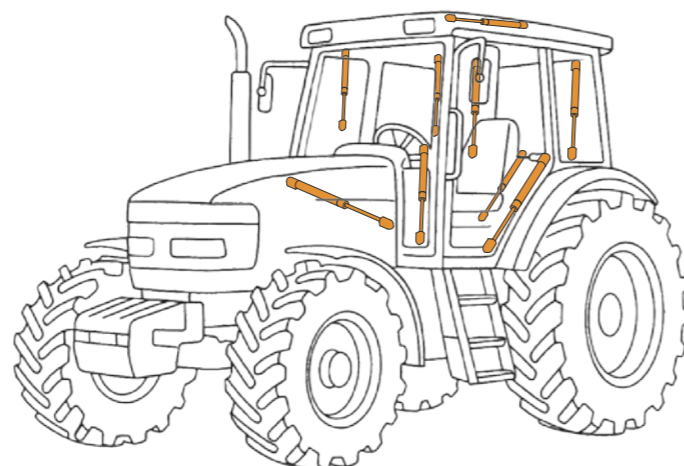
Pistoni a gas: alcuni settori di applicazione
Gas Springs: Areas of application
Auto, Veicoli Commerciali
Bagagliaio auto, scomparto valigie autobus, cabriolet, tendoni per camper, ambulanze, veicoli antincendio (Vigili del Fuoco), camion betoniera...

Cars and Commercial Vehicles
Car boot, bus luggage compartment, convertibles, caravan awnings, ambulances, fire-fighting vehicles (Fire Brigade), concrete mixer truck, etc...

Macchinari Agricoli
Trattori, macchine scavatrici, mietitrebbie, autocarri con cassone ribaltabile...

Agricultural Machinery
Tractors, excavators, combine harvesters, dumper trucks, etc...

Arredo Casa e Finestre
Ante pensili cucina, letti contenitori, divani-letto, poltrone reclinabili, tavolini da caffè con piano rialzabile, televisioni con montaggio a parete, lucernai...

Home Furnishing and Windows
Kitchen cabinet doors, container beds, sofa beds, recliner armchairs, coffee tables with lift-up tops, wall-mounted TVs, skylights, etc...
Macchinari Agricoli
Trattori, macchine scavatrici, mietitrebbie, autocarri con cassone ribaltabile...

Agricultural Machinery
Tractors, excavators, combine harvesters, dumper trucks, etc...

Attrezzature Sanitarie
Letti elettrici ospedalieri, lettini abbronzanti, carrozzine, poltrone odontoiatriche...

Health Equipment
Hospital electric beds, tanning beds, wheelchairs, dental chairs, etc...