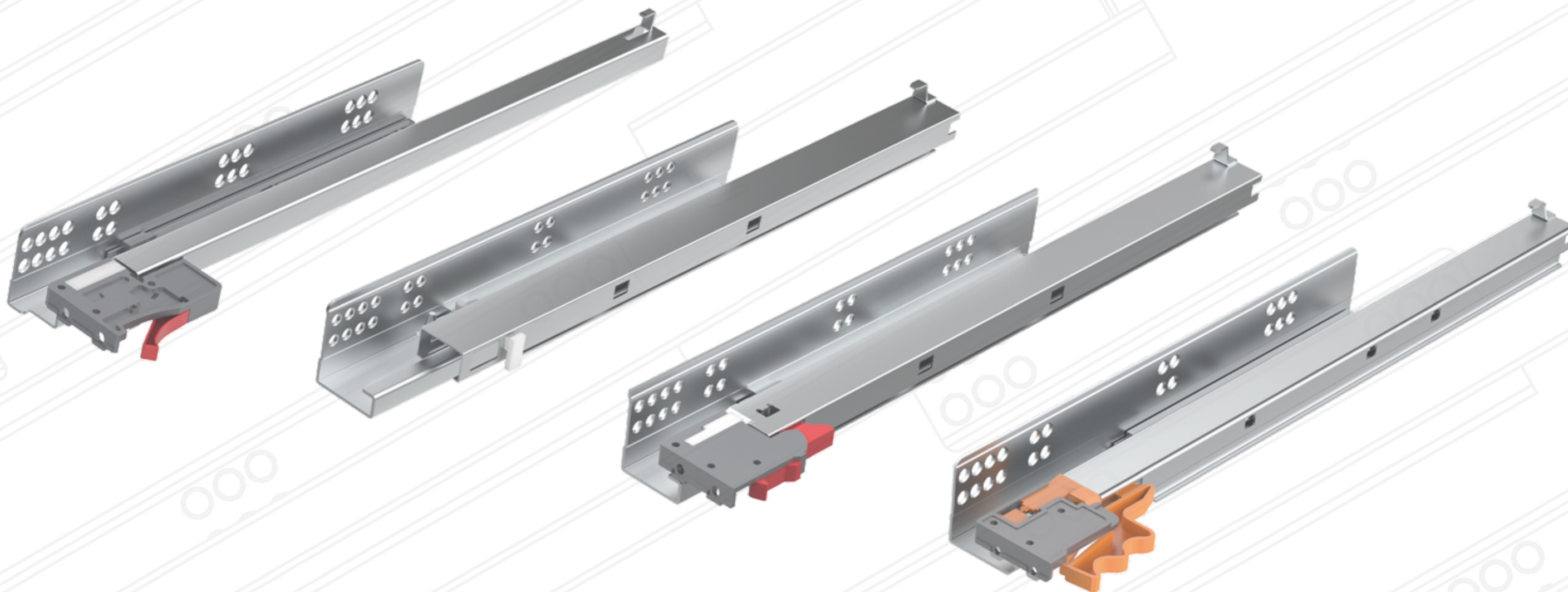




GUIDE SOTTOCASSETTO

UNDER-MOUNTED SLIDES



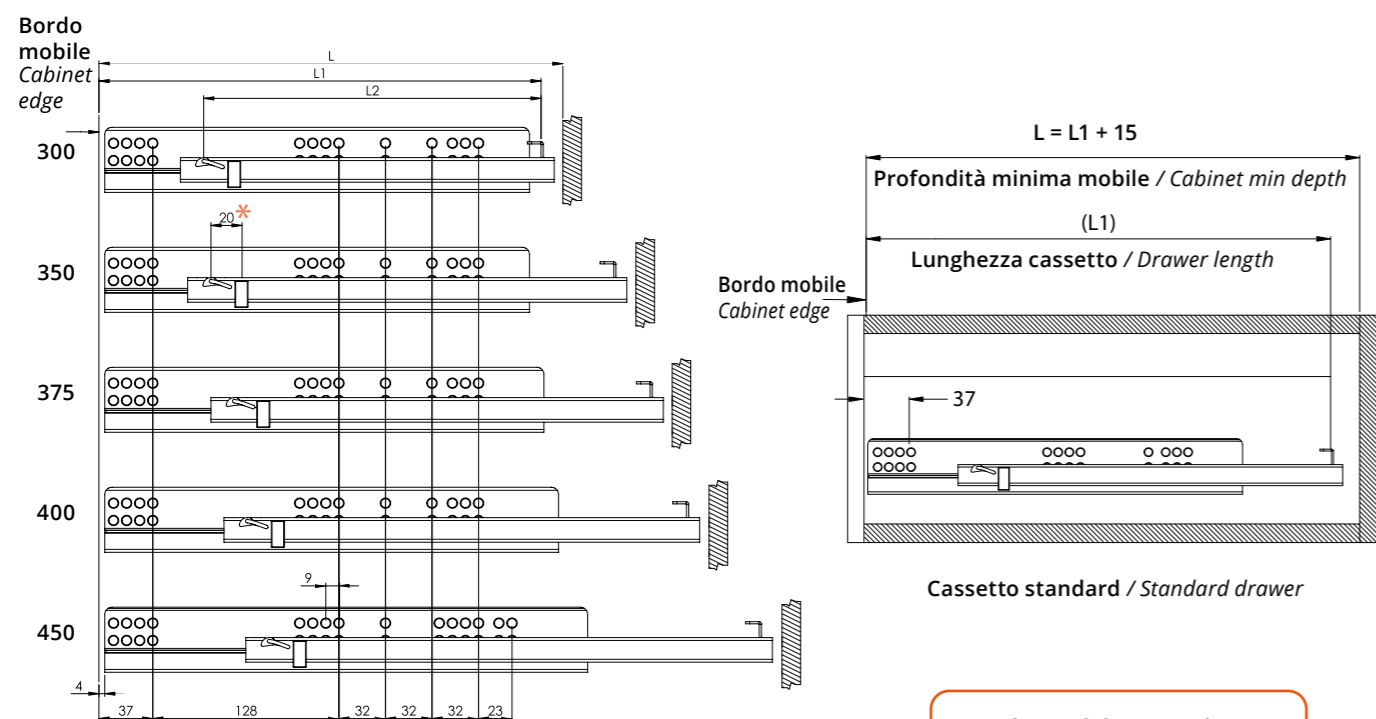
Guide Sottocassetto Ammortizzate, Estrazione Parziale, con Perno di Regolazione Eccentrico
Soft-Closing Single-Extension Under-Mounted Slides, with Eccentric Adjustment Pin

Specifiche

Materiale: ferro zincato
Portata: 25 Kg (450 mm)
Spessore: 1,5x1,5 mm
Durata: 50.000 cicli

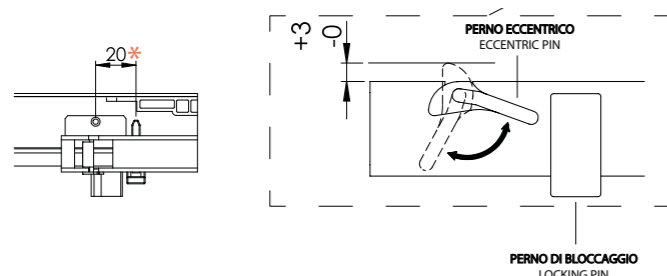
Specifications

Material: Galvanized steel
Load rating: 25 Kg (450 mm as standard)
Thickness: 1.5x1.5 mm
Cycling: 50,000 times



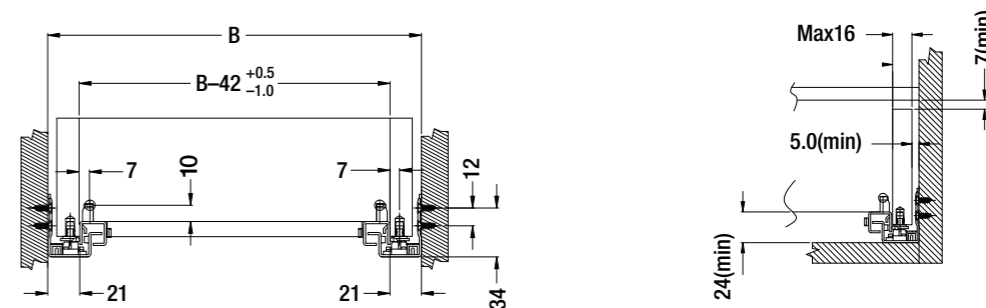
N.B. è possibile avere altre misure non presenti nella scala su richiesta del cliente

N.B. other sizes other than those shown are available upon request

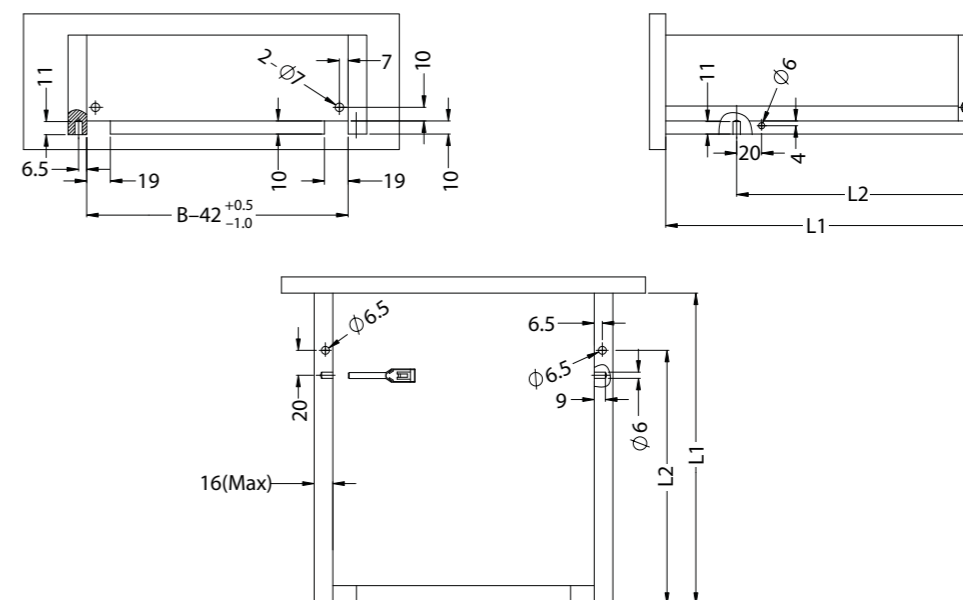


Lunghezza guida / Slide length	Lunghezza cassetto (L1) / Drawer length (L1)	Corsa / Travel	Profondità minima mobile (L) / Cabinet min depth (L)	Foro di montaggio (L2) / Assembling hole (L2)	Coppie per scatola / Sets per box
300 mm	304 mm	210 mm	319 mm	231 mm	10
350 mm	354 mm	255 mm	369 mm	276 mm	10
375 mm	379 mm	280 mm	394 mm	286 mm	10
400 mm	404 mm	305 mm	419 mm	301 mm	10
450 mm	454 mm	320 mm	469 mm	336 mm	10

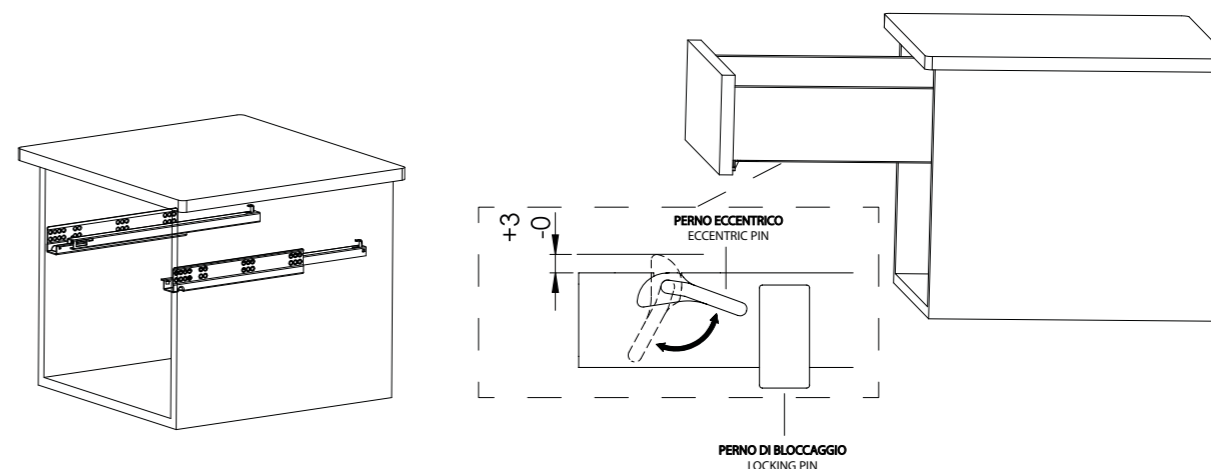
Spazio interno mobile
Cabinet Inner Space



Dimensioni cassetto e schema foratura
Drawer size and drilling diagram



Montaggio
Assembly



Montare la guida sinistra e destra su entrambi i lati del mobile
Assemble the left and right slides on both sides of cabinet

Posizionare il cassetto sulle guide e agire sul Perno Eccentrico per effettuare la Regolazione. Infine bloccare il cassetto con il Perno di Bloccaggio

Fit drawer on slides and adjust using Eccentric Pin. Finally, secure drawer with Locking Pin.

PSLV-S

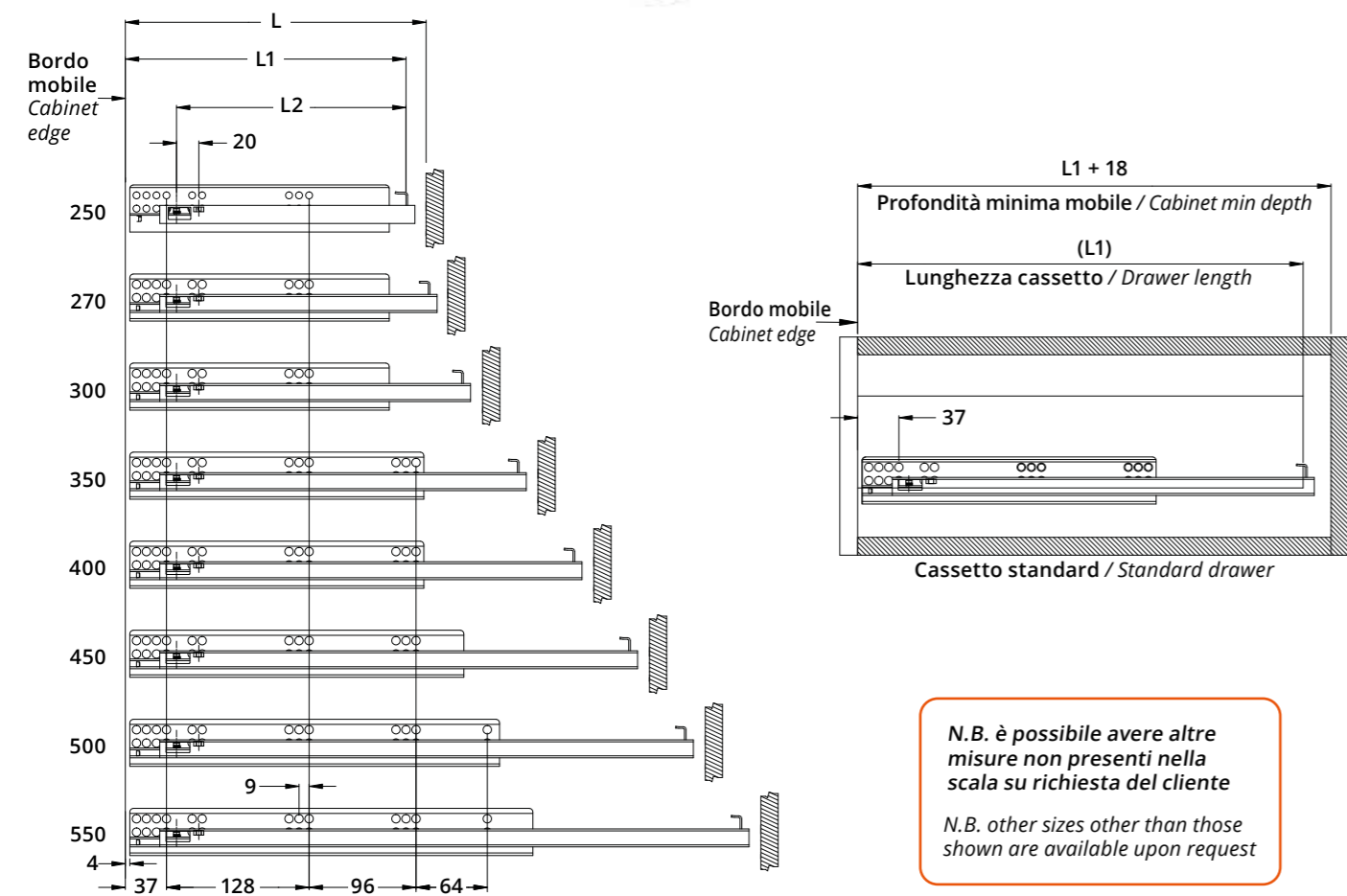
Guide Sottocassetto Ammortizzate, Estrazione Parziale, con Perno Single-Extension Soft-Closing Under-Mounted Slides, with Pin

Specifiche

Materiale: ferro zincato
Portata: 25 Kg (450 mm)
Spessore: 1,5x1,5 mm
Durata: 50.000 cicli

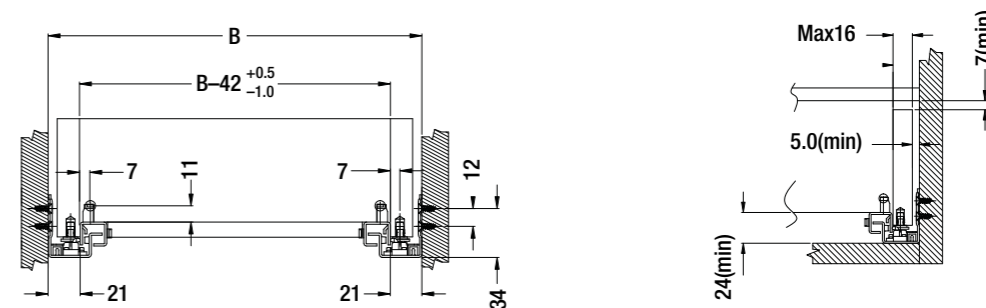
Specifications

Material: Galvanized steel
Load rating: 25 Kg (450 mm as standard)
Thickness: 1.5x1.5 mm
Cycling: 50,000 times

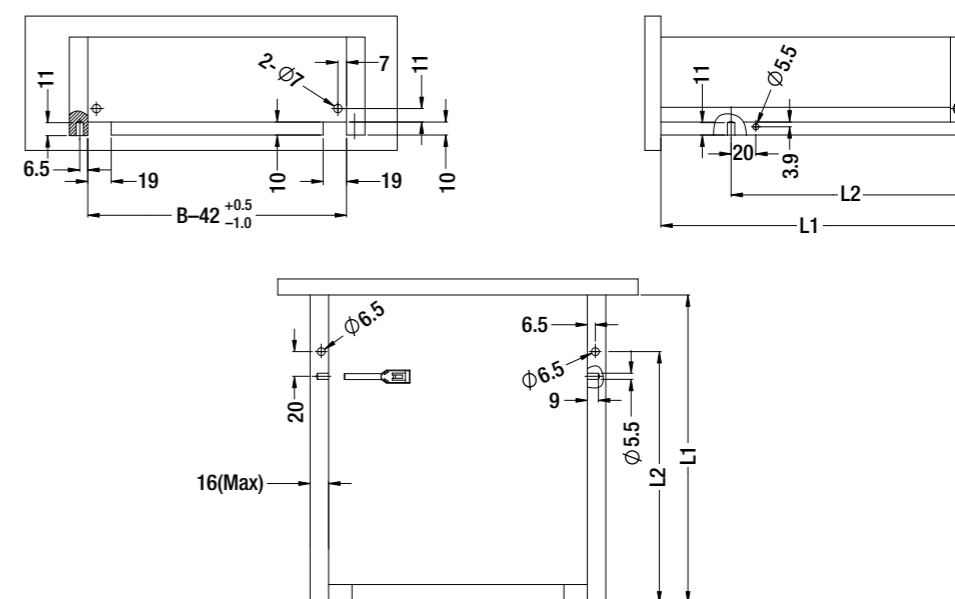


Lunghezza guida Slide length	Lunghezza cassetto (L1) Drawer length (L1)	Corsa Travel	Profondità minima mobile (L) Cabinet min depth (L)	Foro di montaggio (L2) Assembling hole (L2)	Coppie per scatola Sets per box
256 mm	250 mm	175 mm	268 mm	206 mm	10
276 mm	270 mm	195 mm	288 mm	226 mm	10
306 mm	300 mm	225 mm	318 mm	256 mm	10
356 mm	350 mm	250 mm	368 mm	306 mm	10
406 mm	400 mm	303 mm	418 mm	356 mm	10
456 mm	450 mm	322 mm	468 mm	406 mm	10
506 mm	500 mm	352 mm	518 mm	456 mm	10
556 mm	550 mm	402 mm	568 mm	506 mm	10

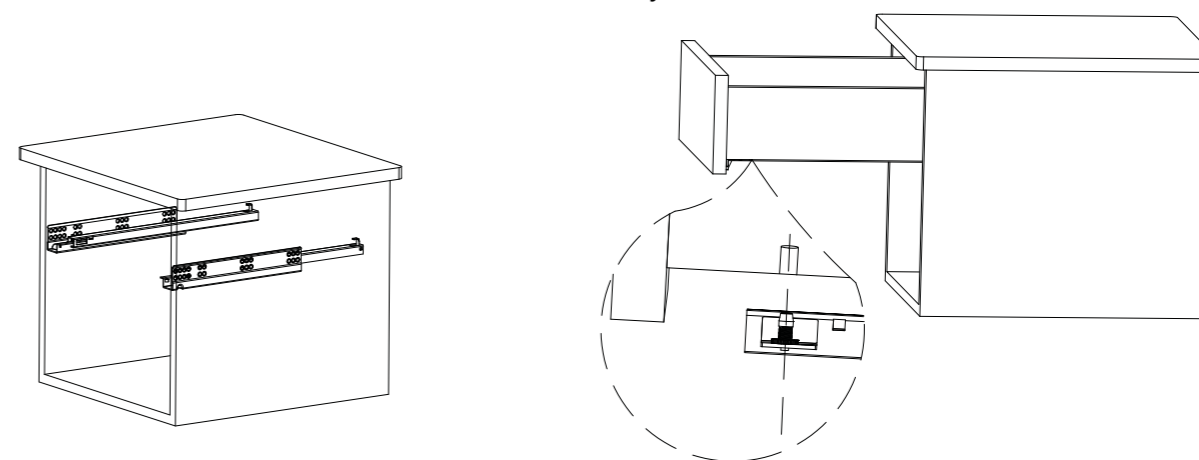
Spazio interno mobile Cabinet Inner Space



Dimensioni cassetto e schema foratura Drawer size and drilling diagram



Montaggio Assembly



Montare la guida sinistra e destra su entrambi i lati del mobile
Assemble the left and right slides on both sides of cabinet

Per completare il montaggio, posizionare il cassetto sulla guide e agire sulla vite di regolazione all'interno del foro sul cassetto e quindi in quello sul mobile
To complete installation fit the drawer on the slide, adjusting screw into the drawer hole, and then into the cabinet.

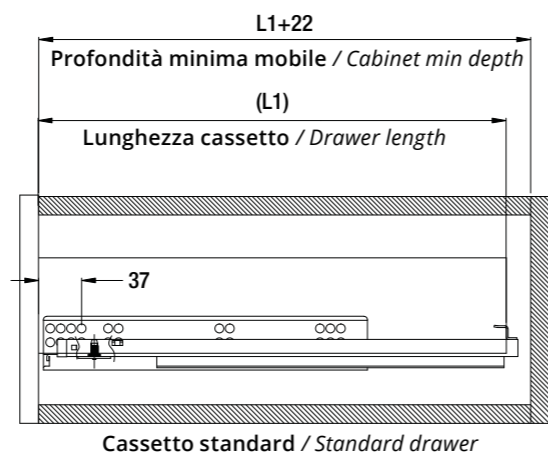
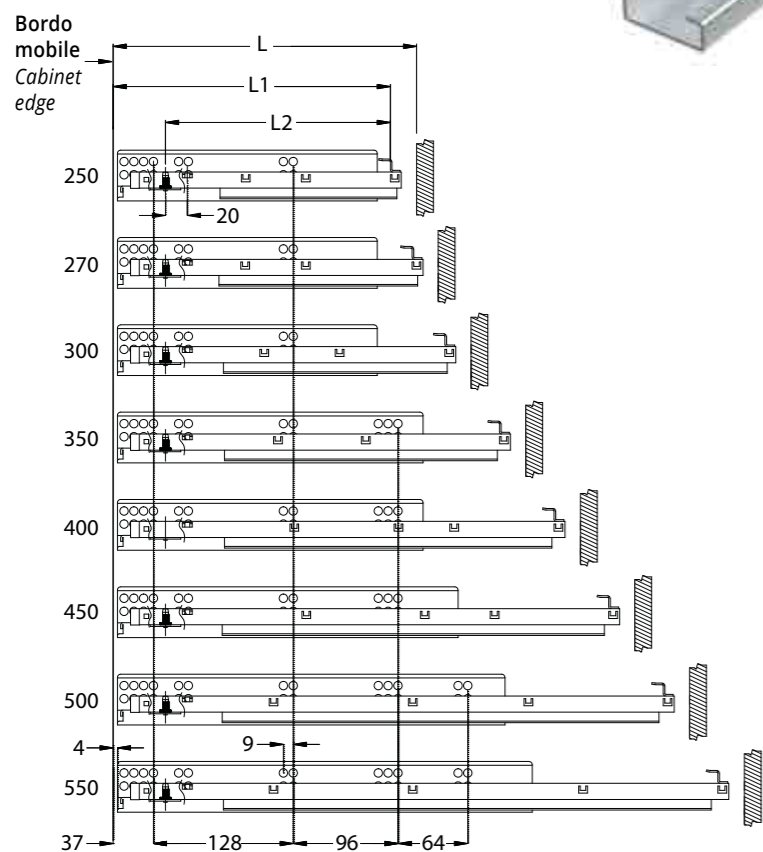
Guide Sottocassetto Ammortizzate, Estrazione Parziale, con Perno
Soft-Closing Full-Extension Under-Mounted Slides, with Pin

Specifiche

Materiale: ferro zincato
Portata: 35 Kg (450 mm)
Spessore: 1,8x1,5x1,0 mm
Durata: 60.000 cicli

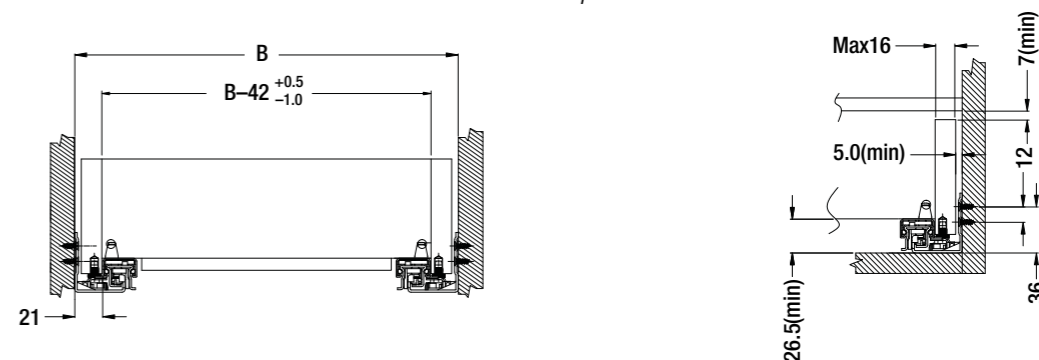
Specifications

Material: Galvanized steel
Load rating: 35 Kg (450 mm as standard)
Thickness: 1.8x1.5x1.0 mm
Cycling: 60,000 times

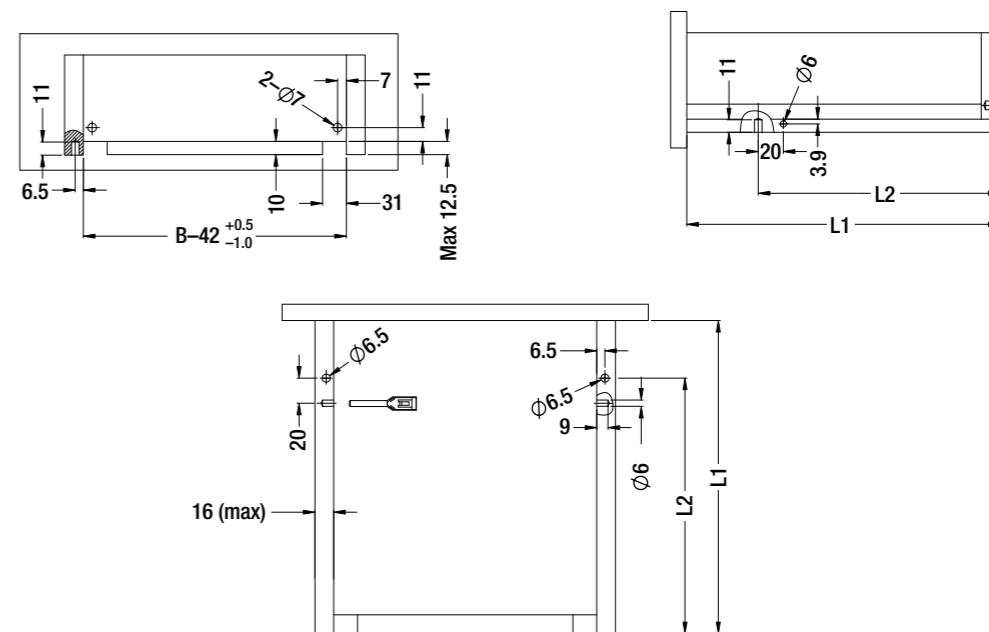


Lunghezza guida Slide length	Lunghezza cassetto (L1) Drawer length (L1)	Corsa Travel	Profondità mobile (L) Cabinet depth (L)	Foro di montaggio (L2) Assembling hole (L2)	Coppie per scatola Sets per box
260 mm	250 mm	230 mm	272 mm	206 mm	10
280 mm	270 mm	250 mm	292 mm	226 mm	10
310 mm	300 mm	280 mm	322 mm	256 mm	10
360 mm	350 mm	330 mm	372 mm	306 mm	10
410 mm	400 mm	380 mm	422 mm	356 mm	10
460 mm	450 mm	430 mm	472 mm	406 mm	10
510 mm	500 mm	480 mm	522 mm	456 mm	10
560 mm	550 mm	550 mm	572 mm	506 mm	10

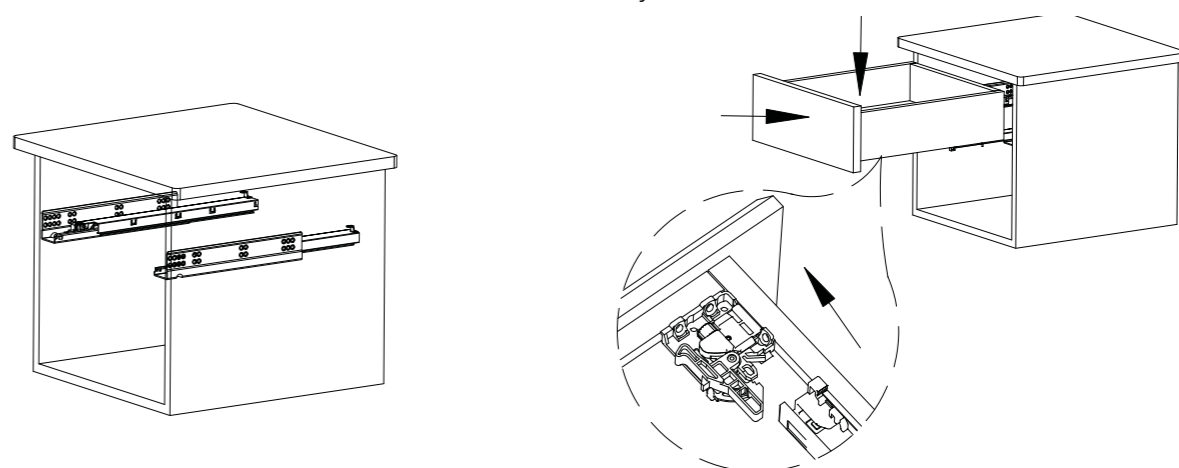
Spazio interno mobile
Cabinet Inner Space



Dimensioni cassetto e schema foratura
Drawer size and drilling diagram



Montaggio
Assembly



Montare la guida sinistra e destra su entrambi i lati del mobile
Assemble the left and right slides on both sides of cabinet

Appoggiare il fondo del cassetto sulla guida e spingere il cassetto nel mobile
Lay drawer bottom panel onto slide, then push drawer into cabinet

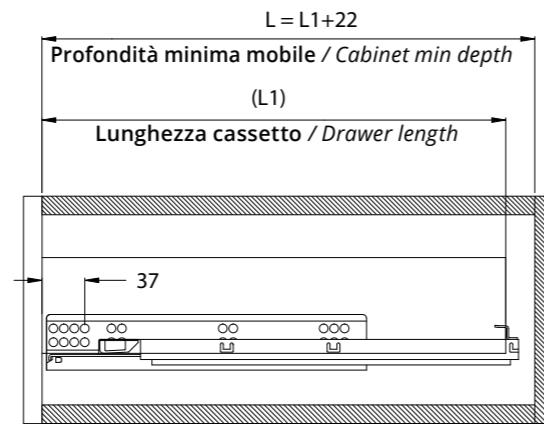
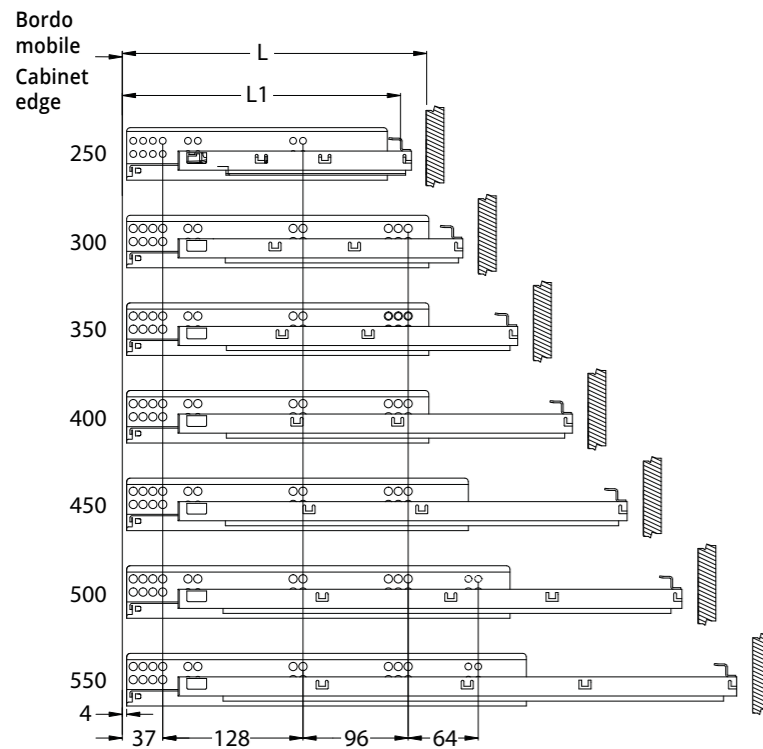
Guide Sottocassetto Ammortizzate, Estrazione Totale, con Sgancio Rapido
Soft-Closing Full-Extension Under-Mounted Slides, with Quick-Release Handle

Specifiche

Materiale: ferro zincato
Portata: 35 Kg (450 mm)
Spessore: 1,8x1,5x1,0 mm
Durata: 60.000 cicli

Specifications

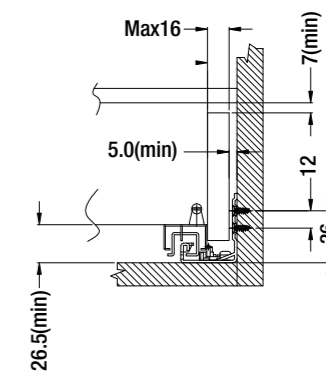
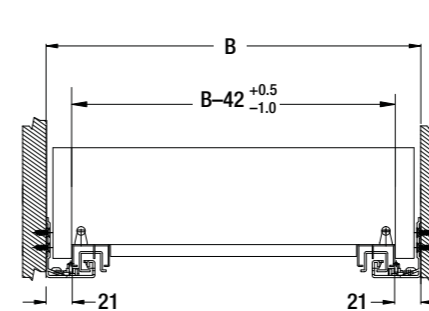
Material: Galvanized steel
Load rating: 35 Kg (450 mm as standard)
Thickness: 1.8x1.5x1.0 mm
Cycling: 60,000 times



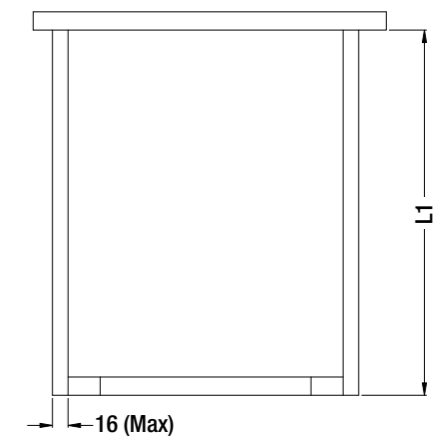
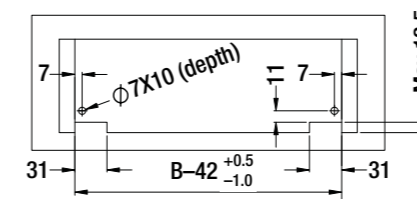
Cassetto standard / Standard drawer

Lunghezza guida Slide length	Lunghezza cassetto (L1) Drawer length (L1)	Corsa Travel	Profondità mobile (L) Mobile depth (L)	Coppie per scatola Sets per box
260 mm	250 mm	233 mm	272 mm	10
310 mm	300 mm	291 mm	322 mm	10
360 mm	350 mm	333 mm	372 mm	10
410 mm	400 mm	383 mm	422 mm	10
460 mm	450 mm	433 mm	472 mm	10
510 mm	500 mm	483 mm	522 mm	10
560 mm	550 mm	553 mm	572 mm	10

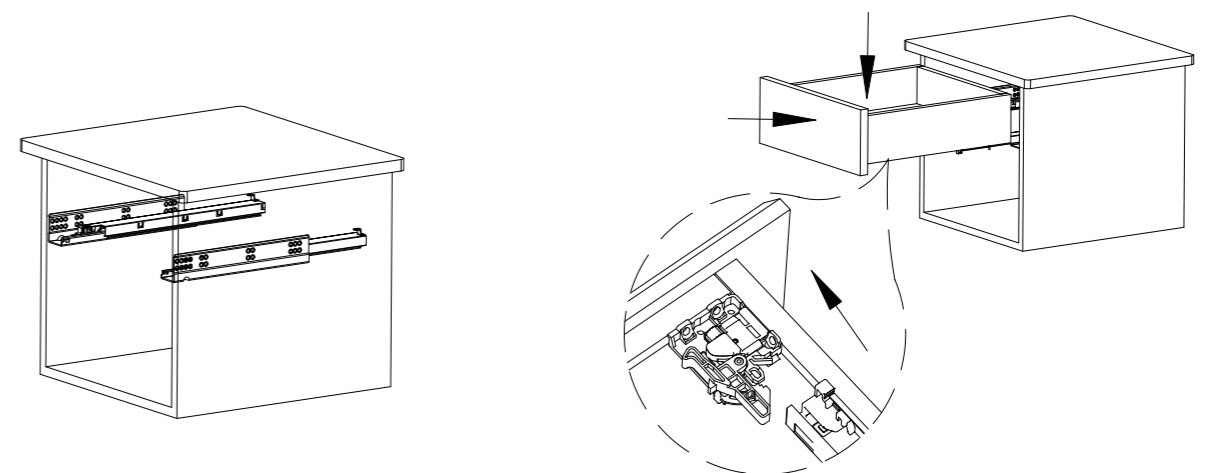
Spazio interno mobile
Cabinet Inner Space



Dimensioni cassetto e schema foratura
Drawer size and drilling diagram



Montaggio
Assembly



Montare la guida sinistra e destra su entrambi i lati del mobile
Assemble the left and right slides on both sides of cabinet

Appoggiare il fondo del cassetto sulla guida e spingere il cassetto nel mobile
Lay drawer bottom panel onto slide, then push drawer into cabinet

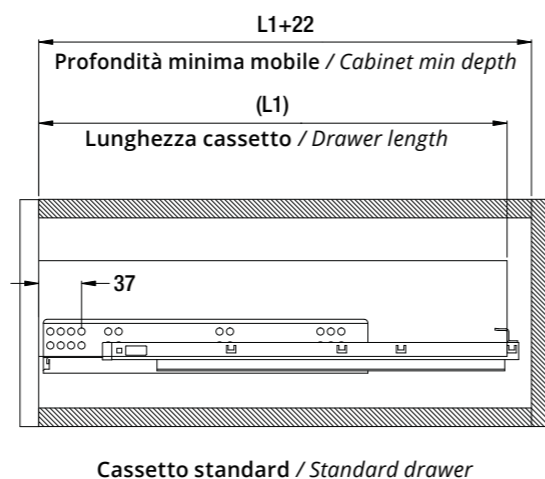
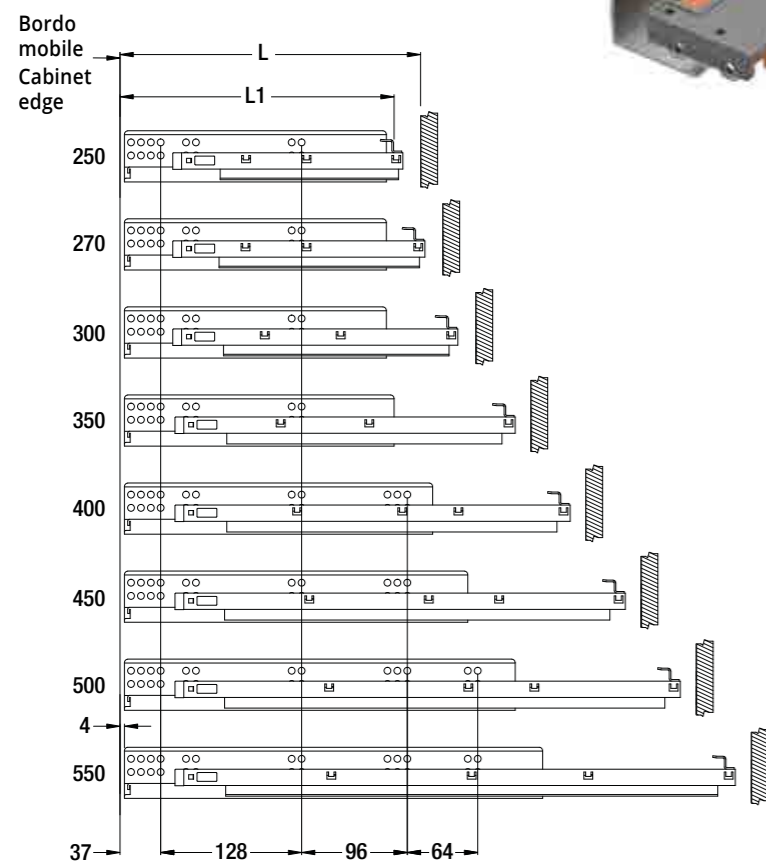
Guide Sottocassetto apertura a pressione, Estrazione Totale, con Sgancio Rapido
Full-Extension Push-to-Open Under-Mounted Slides, with Quick Release Handle

Specifiche

Materiale: ferro zincato
Portata: 35 Kg (450 mm)
Spessore: 1,8x1,5x1,0 mm
Durata: 60.000 cicli

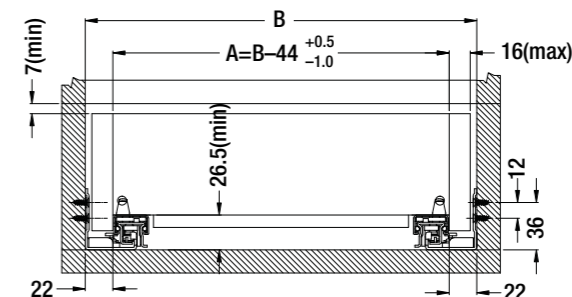
Specifications

Material: Galvanized steel
Load rating: 35 Kg (450 mm as standard)
Thickness: 1.8x1.5x1.0 mm
Cycling: 60,000 times

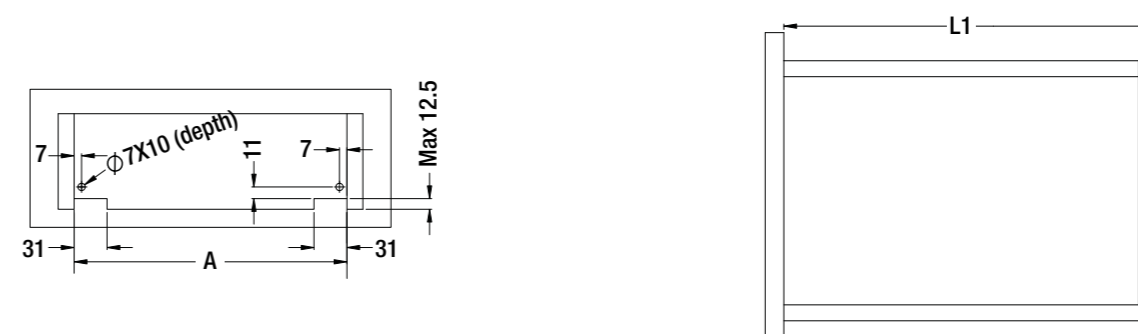


Lunghezza guida Slide length	Lunghezza cassetto (L1) Drawer length (L1)	Corsa Travel	Profondità mobile (L) Mobile depth (L)	Coppie per scatola Sets per box
255 mm	250 mm	228 mm	272 mm	10
275 mm	270 mm	248 mm	292 mm	10
305 mm	300 mm	278 mm	322 mm	10
355 mm	350 mm	327 mm	372 mm	10
405 mm	400 mm	377 mm	422 mm	10
455 mm	450 mm	427 mm	472 mm	10
505 mm	500 mm	477 mm	522 mm	10
555 mm	550 mm	527 mm	572 mm	10

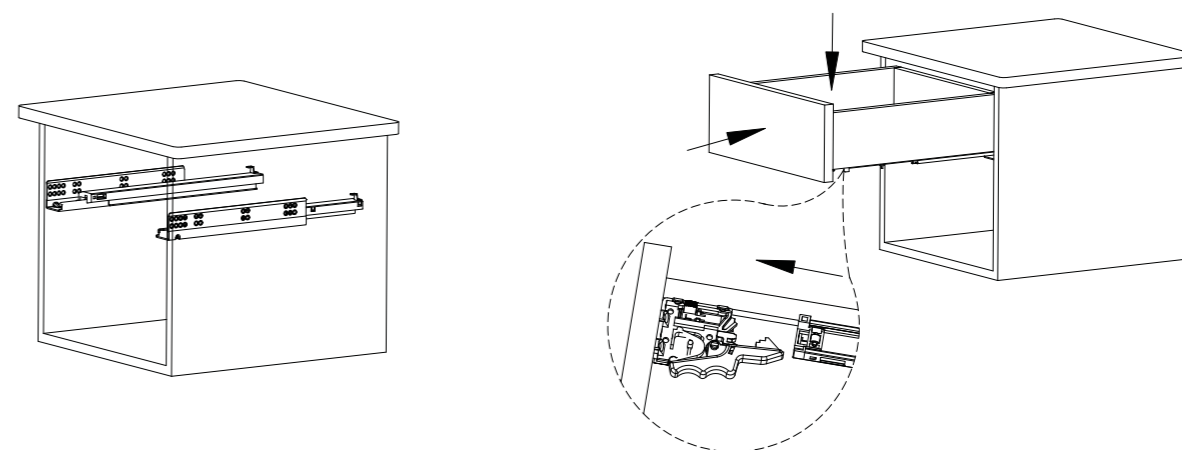
Spazio interno mobile
Cabinet Inner Space



Dimensioni cassetto e schema foratura
Drawer size and drilling diagram



Montaggio
Assembly



Montare la guida sinistra e destra su entrambi i lati del mobile
Assemble the left and right slides on both sides of cabinet

Appoggiare il fondo del cassetto sulla guida e spingere il cassetto nel mobile
Lay drawer bottom panel onto slide, then push drawer into cabinet