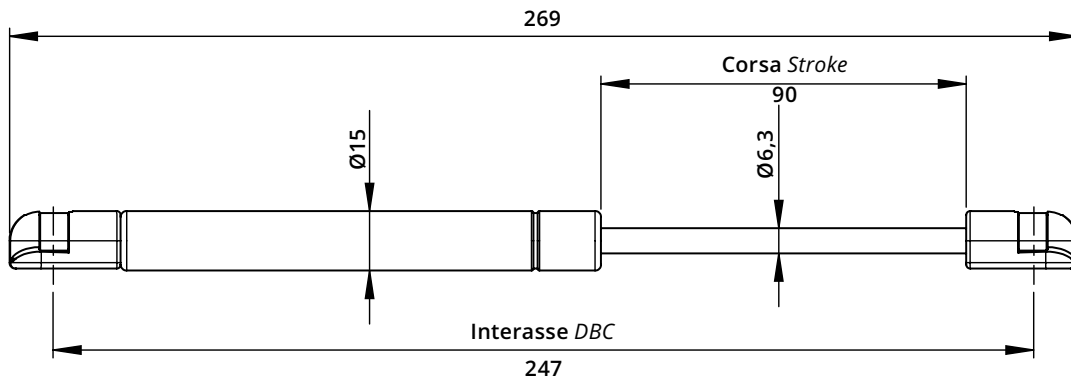
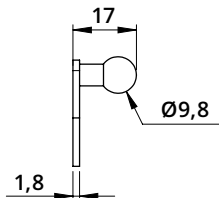
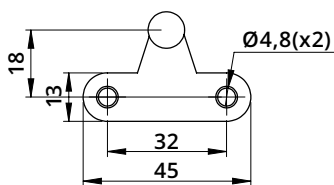
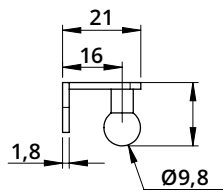
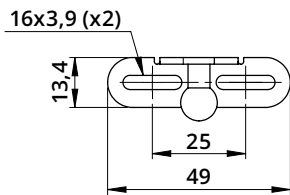
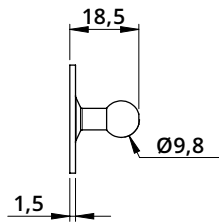
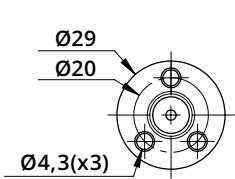


**Pistoni a gas con attacchi a pressione, forniti con staffe e viti, per anta a ribalta**  
Gas springs with quick-type end fitting, supplied with brackets and screws, for drop-down doors



**FORZE DISPONIBILI - AVAILABLE FORCES**

80	100	120
----	-----	-----



Vite Svasata  
autofilettante (x7)  
Chamfered self-tapping  
screw (x7)

