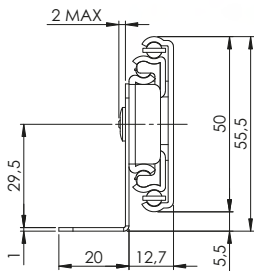


# T50-SI

## Guida a Sfere Estrazione Totale Con Staffa (60kg)

Full-Extension Ball-Bearing Slide with Bracket (60kg)



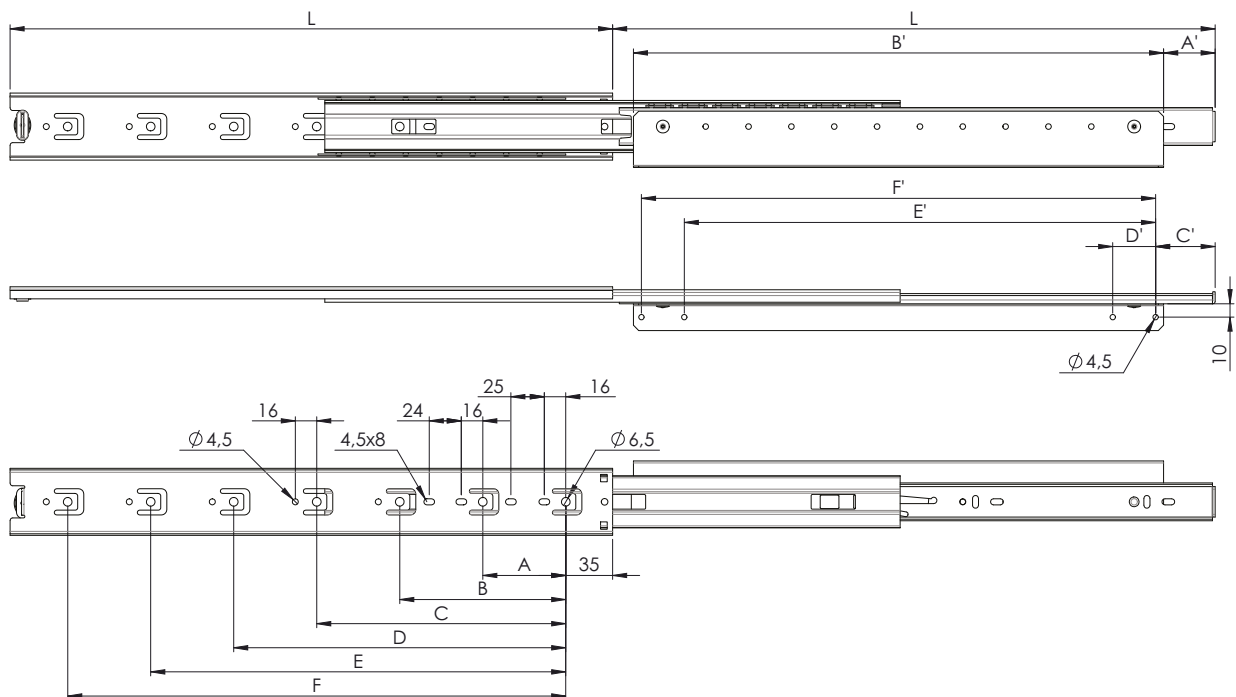
### Specifiche/Specifications

Portata/Load Capacity: **60 Kg** (450mm)

Materiale/Material: **Ferro zincato/Steel galvanized**

Parte cassetto sganciabile/Drawer removal

Montaggio laterale/Side mount



L	A	B	C	D	E	F	A'	B'	C'	D'	E'	F'
300	64	224	/	/	/	/	25.5	258	31	32	215	247
350	64	224	/	/	/	/	18.5	340	28.5	/	/	320
400	64	224	288	/	/	/	50.5	340	60.5	/	/	320
450	64	224	352	/	/	/	38.5	396	44.5	32	352	384
500	64	224	352	/	/	/	39.5	458	44.5	32	416	448
600	64	224	352	480	/	/	103.5	458	108.5	32	416	448
650	64	224	352	512	/	/	21.5	590	26.5	32	548	580
700	64	224	352	512	576	/	53.5	590	58.5	32	548	580
800	64	224	352	512	672	/	38.5	716	44	32	672.5	704.5
900	64	224	352	512	640	768	38.5	844	44.5	32	800	832