

# P10-L

## Guida a Sfere Estrazione Parziale con Fori

Single-Extension Ball-Bearing Slide with Standard Hole Pattern



### Versione metallo a richiesta/For metal furniture



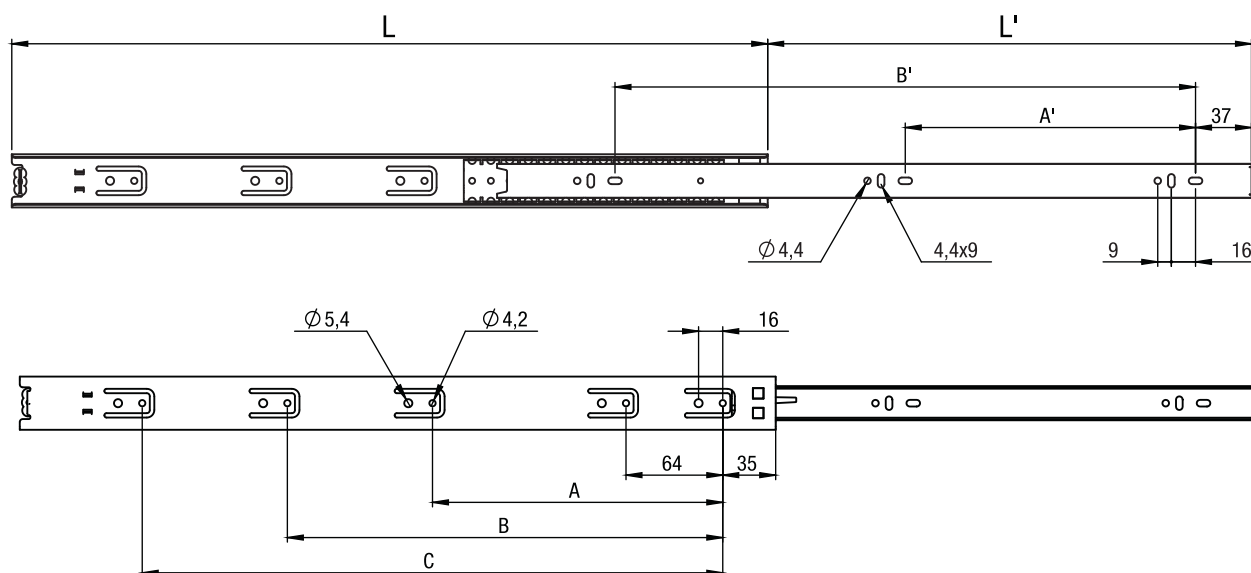
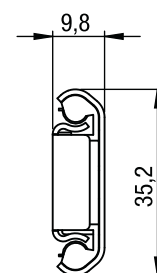
### Specifiche/Specifications

Portata/Load Capacity: **30 Kg - L. 450**

Materiale/Material: **Ferro zincato/Steel galvanised**

Parte cassetto sganciabile/Removable inner member

Montaggio laterale/Side mount



L	L'	A	B	C	A'	B'
306	215	224	/	/	96	256
350	255	256	/	/	128	288
400	295	192	288	/	160	320
450	330	224	352	/	160	352
500	375	224	320	416	192	416
557	415	224	352	480	224	448
610	462	224	352	480	256	512