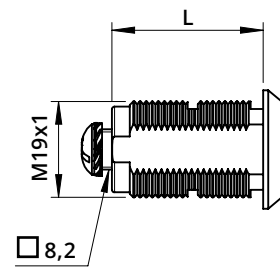
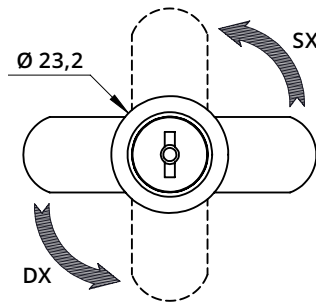
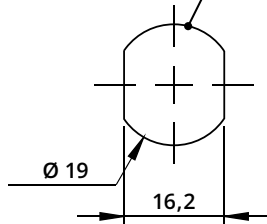
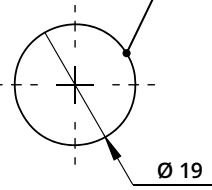
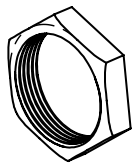


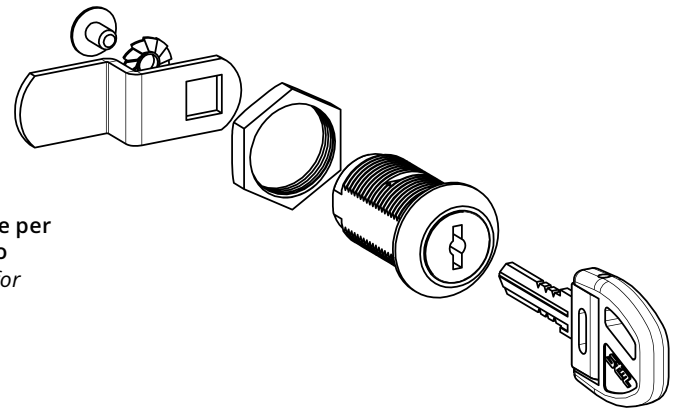
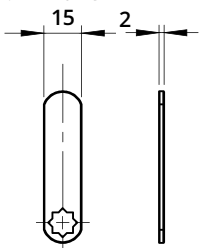
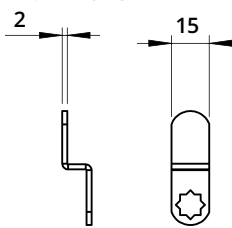
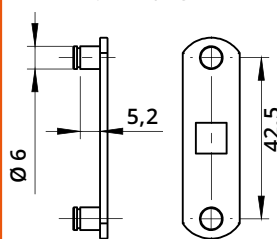
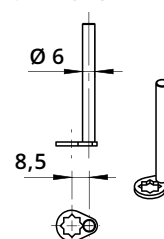
**Serratura universale - Rot. 90°**

Universal Lock for Wooden and Metal Cabinets - 90° Rotation



Cilindro / Cylinder	L
	16
	20
	25
	30
	35
	40

**Foro anta Metallo**  
Metal Door Hole

**Foro anta Legno**  
Wooden Door Hole

**A1013**  
Dado di fissaggio  
Hexagon Nut

**A1015**  
Clip

**A1012**  
Rondella con punte per  
fissaggio legno  
Locking Washer for  
Wood Fixing

**Leva dritta**  
vedi pag. 207-208  
For straight cam plate  
refer to page 207-208

**Leva piegata**  
vedi pag. 207-208  
For bent cam plate  
refer to page 207-208

**Leva con perni ad asta**  
vedi pag. 208  
For cam plate with lock bar pins  
refer to page 208

**Perno**  
vedi pag. 209  
For tail  
refer to page 209


Descrizione Description	Standard	Optional
Cifratura Key Code	400 codici chiave 400 Key Codes	
Finitura Finishing	Cromatura Nickel Plating	Brunitura Black N.P.
Tipo chiave Key Type	Plastica snodata Plastic Hinged	Fissa metallo Metal Fixed
Colore impugnatura Key Cap Color	Nero Black	Grigio Grey
Chiave maestra Master Key System	NO NO	SI Yes
Cilindro estraibile Interchangeable Cylinder	NO NO	SI Yes