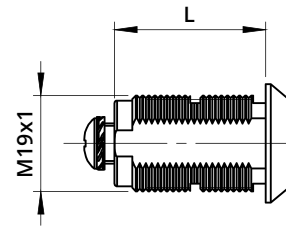
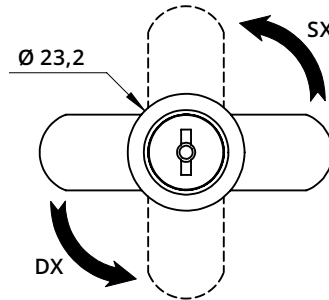


103 90°

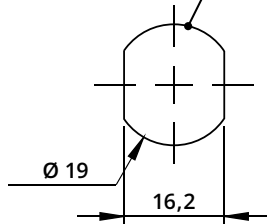
**Serratura universale - Rot. 90°**

Universal Lock for Wooden and Metal Cabinets - 90° Rotation

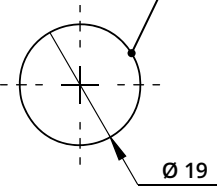


Cilindro / Cylinder	L
	16
	20
	25
	30
	35
	40

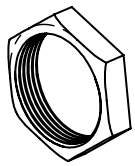
**Foro anta Metallo**  
Metal Door Hole



**Foro anta Legno**  
Wooden Door Hole



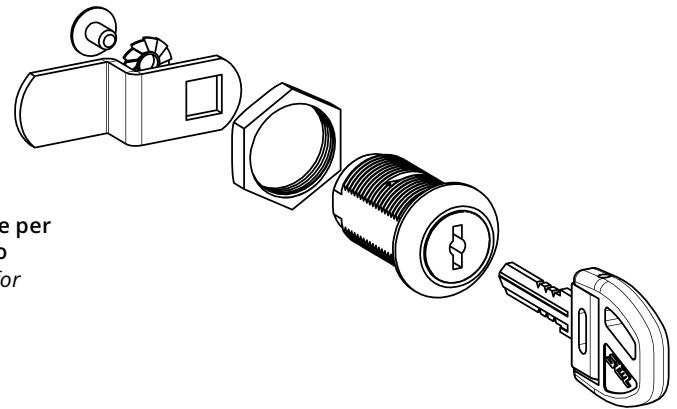
**A1013**  
Dado di fissaggio  
Hexagon Nut



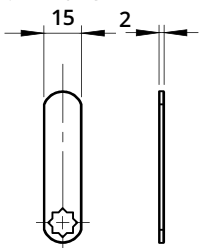
**A1015**  
Clip



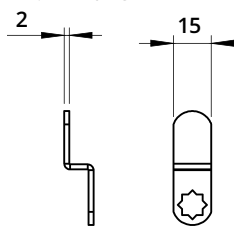
**A1012**  
Rondella con punte per  
fissaggio legno  
Locking Washer for  
Wood Fixing



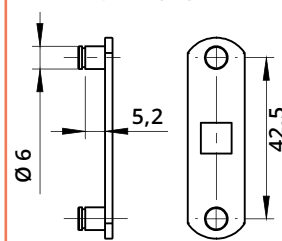
**Leva dritta**  
vedi pag. 196-197  
For straight cam plate  
refer to page 196-197



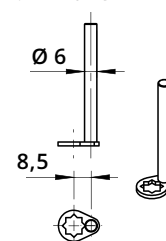
**Leva piegata**  
vedi pag. 196-197  
For bent cam plate  
refer to page 196-197



**Leva con perni ad asta**  
vedi pag. 197  
For cam plate with lock bar pins  
refer to page 197



**Perno**  
vedi pag. 198  
For tail  
refer to page 198



Descrizione Description	Standard	Optional
<b>Cifratura</b> Key Code	400 codici chiave 400 Key Codes	
<b>Finitura</b> Finishing	Cromatura Nickel Plating	Brunitura Black N.P.
<b>Tipo chiave</b> Key Type	Plastica snodata Plastic Hinged	Fissa metallo Metal Fixed
<b>Colore impugnatura</b> Key Cap Color	Nero Black	Grigio Grey
<b>Chiave maestra</b> Master Key System	NO NO	SI Yes
<b>Cilindro estraibile</b> Interchangeable Cylinder	NO NO	SI Yes