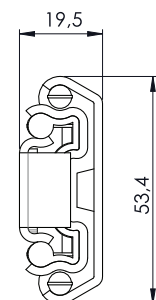
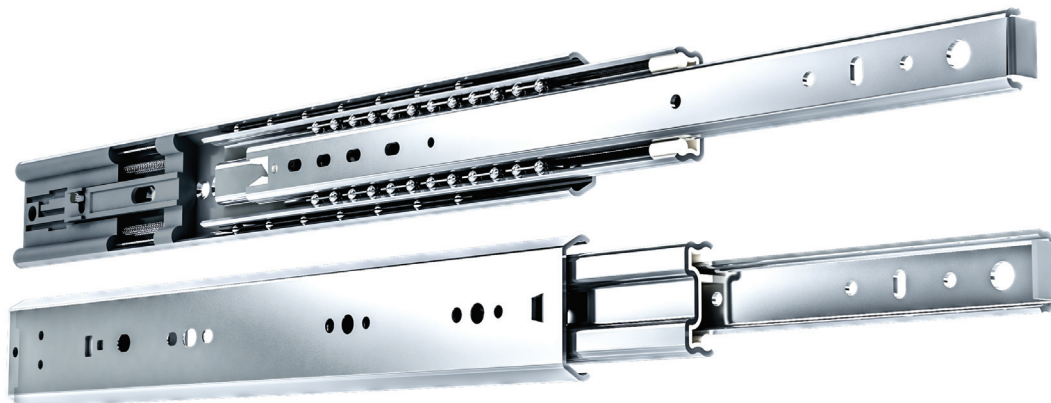


# T53-L-S

## Guida a Sfere Estrazione Totale Con Fori e Rientro Ammortizzato (70kg)

Full-Extension Ball-Bearing Slide with Standard-Hole Pattern and Soft Closing Device (70kg)



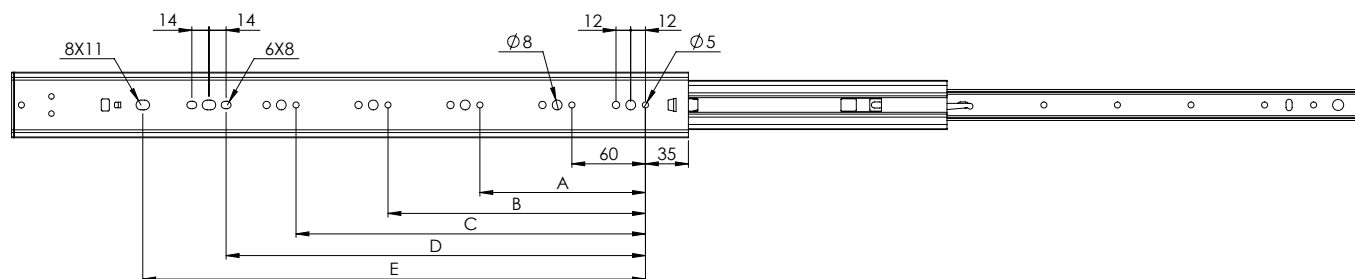
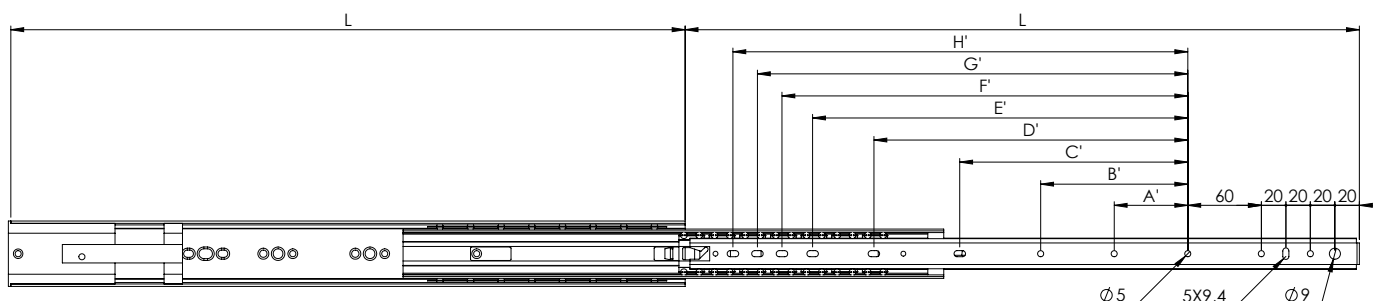
### Specifiche/Specifications

Portata/Load Capacity: 70 Kg (450mm)

Materiale/Material: Ferro zincato/Steel galvanized

Parte cassetto sganciabile/Drawer removal

Montaggio laterale/Side mount



L	A	B	C	D	E	A'	B'	C'	D'	E'	F'	G'	H'
300	/	/	/	92	160	/	/	/	/	120	/	/	/
350	/	/	/	142	210	/	/	/	/	150	170	/	/
400	/	/	/	192	260	60	/	/	/	180	200	220	/
450	/	/	/	242	310	60	/	/	/	205	230	250	270
500	210	/	/	292	360	60	/	/	/	255	280	300	320
550	210	/	/	342	410	60	120	/	/	305	330	350	370
600	210	/	/	392	460	60	120	/	277	355	380	400	420
700	210	310	/	492	560	60	120	195	327	455	480	500	520
800	210	310	460	592	660	60	120	195	376	555	580	600	620
900	210	310	460	692	760	60	120	195	407	655	680	700	720
1000	210	310	460	792	860	60	120	195	456	755	780	800	820